



**Quarry Hill  
Nature Center  
Summer Youth  
Programs  
2025**







# FROM THE DIRECTOR

PAMELA MEYER

Opening the door to the great outdoors since 1972 and “opening eyes & minds through natural science discovery,” our mission comes to life every day of summer camp.

Summer is many things. It is early sunrises and late sunsets. It is warm days and a slower carefree pace. It is the chorus of kids who are out of school and out of doors - laughing, playing, and running wild. Summer is something we look forward to all year long.

We could not be more excited to welcome your camper to Quarry Hill for summer nature camp 2025. We can hardly wait to paddle on the pond and fish off the dock. We are itching to explore the cave, the prairies, and the forest. We are counting the days until, together with campers, we seek new discoveries wherever our camp path leads.

Adventure awaits and we are ready!

## Summer Staff:

The Friends of Quarry Hill Nature Center summer team includes our permanent staff and seasonal staff with education, science, and environmental education backgrounds. Enthusiasm and experience with children and knowledge of the natural world shine through in their interactions with campers and creative adventures.

In addition to staff, high school students join our team as camp leader assistants. High school assistants are students that have committed to complete a .5 credit independent study course requiring 60 hours assisting camp leaders.



## Scholarships Available

Any child whose family meets the income eligibility guidelines for [Educational Benefits from the MN Department of Education](#) (formerly the Free & Reduced Lunch Program) qualifies for a camp scholarship.

Scholarships are available for Bird Watch and Summer Nature Camp. Please contact Quarry Hill Nature Center with questions (507) 328-3950 or apply at the link below.

[Apply here.](#)



# Bird Watch Bonanza!

AN ACTIVE OUTDOOR EXPERIENCE FOR  
ADVENTURERS AGES 4 TO 7 WITH AN ADULT

Flap, fly, and soar your way up to the Oak Savanna with a Quarry Hill naturalist! We're calling all adventurers, ages 4 -7, and their adult sidekick to flock together for this flying wild birding experience. On this 90-minute adventure, naturalists will teach you birding basics like using binoculars (that you get to keep!), introduce you to a live raptor, and lead you in discovering the wonderful world of birds.

The adventure continues at home. With your new *Bird Watch* book as your guide, you can explore all summer long! Earn *Bird Watch* stickers as you put your newfound skills and bird-watching tools to work.

Each adventurer will go home with their own Quarry Hill Bird Watch tote, which includes a copy of the interactive book *Backpack Explorer: Bird Watch*, binoculars, a backyard bird ID sheet, a feather quill, and a tweet treat for the birds in their own backyard.

This is an active outdoor experience where all activities are geared toward the abilities and interests of children ages 4-7. To provide the best experience for all participants, only children registered for the class may attend. Siblings and other children will not be allowed to accompany.



[Register here.](#)



## Scholarships Available!

Any child whose family meets the income eligibility guidelines for Educational Benefits from the MN Department of Education qualifies for a camp scholarship. Scholarships cover 50% of fees. Call 507-328-3950 for questions or apply at the link.

[Apply here.](#)

## Choose From:

July 15 or July 29

Start times vary. Times are listed on the online.

Rain date is Wednesday of the same week.

**Cost:** \$40, \$35/members

(includes a one-time 90-minute experience plus *Bird Watch* tote)

**Location:** Class meets at the west entrance to Quarry Hill Park at 2100 9th St. NE.

**Registration:**

Quarry Hill member priority Feb 25 - March 5

Open enrollment begins March 6

**Refunds/Cancellations:**

Bird Watch Bonanza is a non-refundable program.

Session changes are allowed if space is available.



# GOOD NATURED KIDS

For 3 & 4 yrs old with an adult

Join us with your little explorer and set them on a path to becoming a good-natured kid! Good Natured Kids is all about getting outdoors to explore, learn and connect to the natural world.

- Good Natured Kids meets entirely outdoors.
- Inclement weather back-up is the following:  
Tuesday Class – Thursday of the same week  
Wednesday Class – Friday of the same week
- *To provide the best experience for all participants, only children registered for the class may attend. Siblings and other children will not be allowed in the class.*

## Six Fun Themes

Choose your favorite or register for the series.

All classes meet from 9:30 - 11:00 am

**Cost:** \$18, \$15/members

**Location:** Meets at the Nature Center

**Registration:** Begins February 25

[Register here.](#)



Quarry Hill program cancellation and refund policies apply to Good Natured Kids classes.

Policies can be found here.

### June 10 or 11: Hello Little Blue

Learn about little blue as we hike the bluebird trail, peek into a nest, and enjoy a sweet “tweet” treat. We’ll also craft our own little blue bird.

### June 24 or 25: Backyard Camper

Snores, lores and s’mores – that’s what makes a great camp out! We’ll go on a scavenger hunt, gather wood for a fire, set up camp & fuel up with a traditional s’more!

### July 8 or 9: Bugliest Bugs

In field and forest, we’ll go on a bug hunting adventure! Test your net skills, play buggy games, and devour a buggy snack. We’ll learn all about what makes even the ‘bugliest’ bugs cool.

### July 22 or 23: Busy Buzzy Bee

Get the buzz on honey bees! Learn all about how hive jives and perfect your waggle dance as we play pollinator. A sticky treat and an up-close encounter with our meadow observation hive will top this sweet class.

### August 5 or 6 : Toadstool Town

There is fungus among us. Join us as we explore the citizens of Toadstool Town! Create your own toadstool to take home, play mushroom games and sample some deliciously creative toadstools.

### August 19 or 20: Migration Magic

Join us as we say adios and good luck to the butterflies that will be migrating south to Mexico for the winter. Learn about why they head south and the challenges they will face during this magical migration. If we are lucky, we may even get to tag a butterfly before sending it on its way!



Quarry Hill Summer Nature Camp is an adventure filled week of natural science exploration that fosters discovery, ignites learning, and inspires action.

Paddle across the pond, scale the rock wall, dig deep into geology, and recharge in the outdoors alongside experienced group leaders in 329 acres of forest, prairie, and stream habitats.



# SUMMER NATURE DAY CAMP REGISTRATION INFORMATION

## How to Register:

Registration is accepted online only. Camp registration is not accepted by phone or mail. If you require assistance with online registration, please call 507-328-3950 Mon - Fri from 9 am - 4 pm. Full payment is required at the time of registration. A one-time fee of \$3 per camper will be added to the total camp fee. Scholarships are available for camp, see details below.

[Register here.](#)

## When to Register:

Member Priority Registration: February 25- March 5

Open Enrollment begins March 6.

All campers registered before May 20 are guaranteed a camp t-shirt, which they will receive on the first day of camp.

## Wait List:

You can add your camper to a waitlist at no charge. If space becomes available, campers on a waitlist will be contacted in the order that their registrations were received. Please provide an email address you frequently check so you can be reached. Campers are encouraged to register for waitlists in any sessions they can attend.

## Scholarships:

Friends of Quarry Hill Nature Center is committed to making camp accessible for all. Scholarships are available for camp. Any child whose family meets the income eligibility guidelines for the [Educational Benefits from the MN Department of Education](#) (formerly the Free & Reduced Lunch Program) qualifies for a camp scholarship. [Income eligibility guidelines can be found here.](#)

A non-refundable fee of \$20 is required to attend any camp with a regular fee of \$120 or less (or ½ of the listed fee for camps over \$120).

Limit one scholarship per camper/per summer.

[Apply here.](#)

## Cancellations:

Requests for cancellations made at least 3 weeks prior to your camp session start date are eligible for a 75% refund. Cancellations made less than 3 weeks prior to your camp start date are not refundable.

Campers withdrawing before the start of camp due to a medical emergency are encouraged to re-schedule in a session with availability. If unable to reschedule, camp fees (less a \$20 processing fee/per camp) will be refunded.

Camp registrations are non-transferrable.

## Session Changes:

Campers requesting a session change must call the Nature Center office. Requests made after May 1 will incur a \$10 fee per change/per camper. Session change requests will only be considered if they are made 2 weeks before the start date of your camp session.



# SUMMER NATURE DAY CAMPS

AM SESSIONS: 9:00 - 11:30AM PM SESSIONS: 12:30 - 3:00PM



## ENTERING KINDERGARTEN

### YOUNG NATURALIST

**CAMP FEE: \$120/\$110 MEMBERS**

Find out what awaits us on the nature trail during this camp for aspiring young naturalists! With science tools in hand, campers will observe, explore, play, and create as they navigate the pages of the nature guide: *Backpack Explorer*, *On the Nature Trail*. Campers will search high and low for the plants and animals that call Quarry Hill Park home, encountering the sights, sounds, and wonders of the natural world. From beginning to end, our time on the trail will be full of fun, naturally! Each camper will receive a copy of *Backpack Explorer*, *On the Nature Trail*.

Offered:	AM Session	PM Session
June 16-20	YN3	YN4
June 23-27	YN5	YN6
July 7-11	YN7	YN8
July 14-18	YN9	YN10
July 21-25	YN11	YN12
July 28 - Aug 1	YN13	Not Offered



## ENTERING GRADES 1&2

### SENSES & DEFENSES

**CAMP FEE: \$120/\$110 MEMBERS**

Can you escape a spider's web, outfox a fox, and blindly find a cricket in a dark cave? Find out as we put our senses and defenses to nature's test. This camp is sure to be a wild time as we use all our senses to explore the tricks animals use to survive in the wild. Excellent eyesight, creative camouflage, tongues that smell and stinky sprays are some of the animal adaptations we'll explore. Each day will be a new adventure filled with plenty of time outdoors exploring and playing nature games that bring the senses into sharper focus.

Offered:	AM Session	PM Session
June 9-13	SD1	SD2
June 16-20	SD3	SD4
June 23-27	SD5	SD6
July 7-11	SD7	SD8
July 14-18	SD9	SD10



## ENTERING GRADES 1&2

### POLLINATION POWER

**CAMP FEE: \$120/\$110 MEMBERS**

We are abuzz with the awesome abilities (and responsibilities) of pollinators from honeybees to hummingbirds and butterflies to moths. Enjoy a daily hike to pollinator habitats to learn what makes them experts in their fields! Join fellow nature nuts in games that explore how pollinators do their greatest work, focus on an up close look at the microscopic and colorful world of pollen, make your own wildflower seed bomb, and visit the outdoor observation hive to see honeybees at work. Cap off the week with a pollination celebration, when together we will pledge to explore, conserve, and protect our pollinator habitats.

Offered:	AM Session	PM Session
July 21-25	PW11	PW12
July 28 - Aug 1	PW13	PW14
Aug 4-8	PW15	PW16
Aug 11-15	PW17	PW18

# SUMMER NATURE DAY CAMPS

AM SESSIONS: 9:00 - 11:30AM PM SESSIONS: 12:30 - 3:00PM

## ENTERING GRADES 3&4

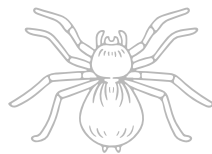
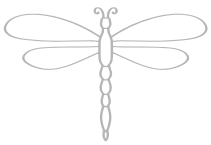
### CATCHING CRITTERS

**CAMP FEE: \$120/\$110 MEMBERS**

Dung beetles, monarchs, stink bugs, damselflies, wolf spiders—there are so many critters to catch and get to know! This week is filled with a variety of outdoor activities and hands-on discoveries in the world of creepy-crawly invertebrates. Plus, campers will canoe, fish, hike and explore the cave.



Offered:	AM Session	PM Session
June 9-13	CC1	CC2
June 16-20	CC3	CC4
June 23-27	CC5	CC6
July 7-11	CC7	CC8
July 14-18	CC9	CC10
July 21-25	CC11	CC12
July 28 - Aug 1	CC13	CC14
Aug 4-8	CC15	CC16
Aug 11-15	CC17	CC18



Quarry Hill Park was once part of the Rochester State Hospital grounds, and there remain interesting historic features from a century of agriculture and quarry operations.

## ENTERING GRADES 3&4

### ARCHAEOLOGY ADVENTURES

**CAMP FEE: \$120/\$110 MEMBERS**

Enjoy solving mysteries? Become a digging detective and uncover clues to Quarry Hill's historical past. After exploring the ruins in the Quarry and around the Park, campers will map out the land and decide where to excavate. Campers will get plenty of outdoor time with a Quarry Hill naturalist observing how nature reclaims and evolves while learning to gather, examine and process artifacts.

Offered:	AM Session	PM Session
July 21-25	AA11	AA12
July 28 - Aug 1	AA13	AA14
Aug 4-8	AA15	AA16
Aug 11-15	AA17	AA18



# SUMMER NATURE DAY CAMPS

**AM SESSIONS: 9:00 - 11:30AM**

**PM SESSIONS: 12:30 - 3:00PM**

## ENTERING GRADES 5&6

### ECO ENGINEER

**CAMP FEE: \$120/\$110 MEMBERS**

*NEW!*

Calling all engineers and innovators! Get ready to use creative engineering and problem-solving skills to become architects of the environment. Using blueprints from nature, campers will create habitat for local wildlife, design wind turbines, and race solar-powered cars. Explore hidden pond life by canoe to examine water quality through microscopes. Coax earthworms from the ground, then walk to the Waste to Energy Facility's giant compost pile to see how nature recycles. Eco Engineering is where nature and STEM intersect in really exciting ways!

Offered:	AM Session	PM Session
June 16-20	EE3	Not Offered
June 23-27	EE5	Not Offered
July 7-11	Not Offered	EE8
July 14-18	EE9	EE10

## ENTERING GRADES 5&6

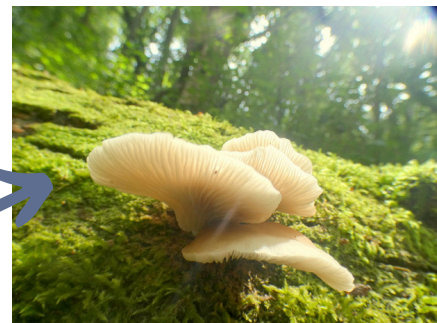
### NATURE PHOTOGRAPHY

**CAMP FEE: \$140/\$130 MEMBERS**

With camera in hand, venture to a unique location in the park each day! Campers will see nature through an all-new lens when they photograph snakes, turtles, butterflies, flowers, moss, and fungus. They will also experiment with light during a slow shutter speed 'flashlight painting' session in the cave. Campers learn the basic elements of photography and photo editing using digital cameras and laptops provided by Quarry Hill.

Offered:	AM Session	PM Session
June 16-20	Not offered	NP4
June 23-27	NP5	Not offered
July 7-11	NP7	Not Offered
July 21-25	NP11	NP12
July 28 - Aug 1	Not offered	NP14
Aug 4-8	NP15	NP16
Aug 11-15	NP17	Not Offered

Photos by our Nature Photography campers! WOW!



**Nature Biker next page**



## ENTERING GRADES 5&6



### HANGING WITH THE BIRDS

**CAMP FEE: \$120/\$110 MEMBERS**

Woodpeckers, warblers, finches, hawks....this camp is for the birds! Campers will work with a Quarry Hill naturalist learning how to safely capture, band and release wild birds. The data gathered from these birds is submitted to the USGS Bird Banding Laboratory which directly helps with conservation. Campers will study cool bird adaptations, gain basic ID skills and test their "bird brains" throughout the week with games and activities while also going rock climbing, canoeing, and fishing.

Offered:	AM Session	PM Session
June 9-13	HB1	HB2
June 16-20	HB3	HB4
June 23-27	HB5	HB6
July 7-11	HB7	HB8
July 14-18	HB9	HB10
July 21-25	HB11	HB12
July 28 - Aug 1	HB13	Not Offered
Aug 4-8	HB15	Not Offered
Aug 11-15	Not Offered	HB18





# SUMMER NATURE DAY CAMPS

**AM SESSIONS: 9:00 - 11:30AM**

**PM SESSIONS: 12:30 - 3:00PM**

## ENTERING GRADES 5&6

### NATURE BIKER

**CAMP FEE: \$150/\$140 MEMBERS**

Exercise, fresh air, adventure! Ride on city bike trails to explore the plants, animal life and health of our local waterways and natural areas. Campers must provide a bike, helmet, and water bottle. Campers will bike between 5-10 miles daily and should be able to sustain a biking speed of 1 mile in 8 minutes.

Minimum wheel size for bikes is 20" and while gears are not required, they are helpful in maintaining the speeds and distances of this active camp.

Offered:	AM Session	PM Session
June 9-13	NB1	NB2
June 23-27	Not Offered	NB6
July 7-11	NB7	Not Offered
July 21-25	Not offered	NB12
July 28 - Aug 1	NB13	Not Offered
Aug 4-8	Not Offered	NB16
Aug 11-15	NB17	Not Offered

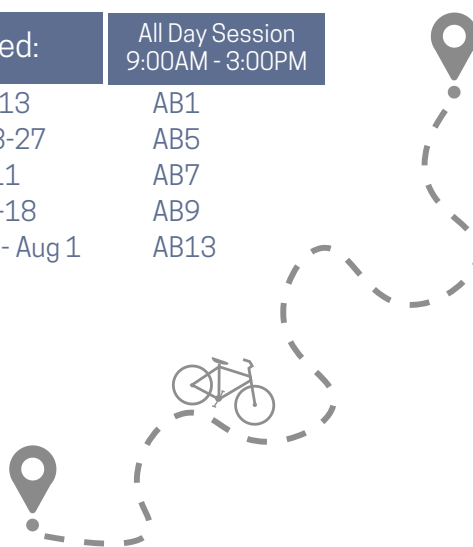
## ENTERING GRADES 7-9

### ADVENTURE BIKER - ALL DAY CAMP!

**CAMP FEE: \$220/\$210 MEMBERS**

Explore the "wilder" side of Rochester by bike. Water and dry land adventures include fishing, canoeing, and fire-starting. Bikers must provide a bike with at least 24" wheels and 3 speeds, sack lunch, water bottle, helmet, and shoes that can be worn in water. To be up to the challenge, bikers should be able to sustain a bike speed to cover 1 mile in less than 6 minutes, and a daily distance of 10+ miles.

Offered:	All Day Session 9:00AM - 3:00PM
June 9-13	AB1
June 23-27	AB5
July 7-11	AB7
July 14-18	AB9
July 28 - Aug 1	AB13



## ENTERING GRADES 7-9

### STREAM SCENE INVESTIGATOR

**CAMP FEE: \$140/\$130 MEMBERS**

Wade into adventure and become a stream scene investigator! Study area waterways and the animals that call them home. Catch and identify fish, crayfish and other critters while observing birds and the other animals that depend on our waterways. Campers will travel to local streams on the Quarry Hill Critter Coach, a 22 passenger mini-bus. (Sandals with a strap or water shoes are required for the camp)

Offered:	AM Session	PM Session
August 4-8	Not Offered	SSI16
August 11-15	SSI17	Not Offered

## ENTERING GRADES 7-9

### AMAZING RACE

**CAMP FEE: \$120/\$110 MEMBERS**

On your mark, get set, GO! Campers will learn to navigate with a GPS, rock climb, kayak, start fires and more. On Friday, campers will put their new skills to the test as they work as a team and try to finish Quarry Hill's very own amazing race course!

Offered:	AM Session	PM Session
June 16-20	AR3	AR4
July 21-25	AR11	AR12
Aug 4-8	AR15	Not Offered
Aug 11-15	Not Offered	AR18

# SUMMER NATURE DAY CAMPS

**AM SESSIONS: 9:00 - 11:30AM**

**PM SESSIONS: 12:30 - 3:00PM**

## ENTERING GRADES 7-9

### TEEN NATURE PHOTOGRAPHY

**CAMP FEE: \$140/\$130 MEMBERS**

Digging deeper into photography composition techniques, campers will hike to little-known reaches of the park for unique photo opportunities. Each day of camp poses a new photographic challenge, with opportunities for collaborative editing and review. Quarry Hill provides digital cameras, computers, and editing software.

Offered:	AM Session	PM Session
June 9-13	Not Offered	TNP2
June 23-27	Not Offered	TNP6
July 7-11	Not Offered	TNP8
July 14-18	TNP9	TNP10
July 28 - Aug 1	TNP13	Not Offered



## ENTERING GRADES 8+

### KAYAK PADDLE DAY TRIP

**CAMP FEE: \$90/\$80 MEMBERS**

Discover SE Minnesota's wild side from inside a kayak. Spend the day looking for bald eagles, turtles, great-blue herons and more as we paddle our kayaks down the river. Lunch will be at the sand bar of our choice. Campers should bring a water bottle and lunch. In case of high water, area lakes will be explored instead. Campers will travel to the kayaking launch on the Quarry Hill Critter Coach, a 22 passenger mini-bus.

Offered: June 30 or July 1 from 9:00 am - 3:00 pm

**NEW!**

## ENTERING GRADES 7-9

### RESERVOIR ROUNDUP

**CAMP FEE: \$150/\$140 MEMBERS**

Minnesota is known as the land of 10,000 lakes, but did you know that Olmsted County doesn't have any natural lakes? We do, however, have beautiful, engineered reservoirs just waiting to be explored! Join us for a week of adventure as we dive into the natural wonders of these unique bodies of water. Campers will discover the waters of Silver Creek Reservoir, Gamehaven Reservoir, and Chester Woods County Park. From fishing and fossil hunting to canoeing, seining, and wildlife studies we will learn the importance of water for recreation and wildlife alike!

Campers will travel to the reservoirs on the Quarry Hill Critter Coach, a 22-passenger mini-bus. Come prepared to get wet, make new friends, and enjoy the wonders of Rochester's reservoirs.

Offered:	AM Session	PM Session
June 16-20	RR4	Not Offered
July 21-25	RR11	Not Offered
Aug 4 - 8	RR15	Not Offered





# QUARRY HILL SUMMER NATURE DAY CAMP FAQ'S

## Can I request to be in the same group as my friend?

Yes. Both campers must request each other to ensure placement in the same camp group.

## How big will my camper's group size be?

Low camp to staff ratio is part of the Quarry Hill camp experience. Entering grades K-6 camp groups consist of 12 or less campers and are led by a staff member and a high school student assistant. Entering grades 7-9 camp groups are up to 16 campers and led by two staff members.

## Can I register my camper for more than one camp?

Yes, if there is more than one camp offering for the grade your camper is entering.

## Are the camps the same each week?

Yes, camps run more than one session and have the same activities each time.

## Can my camper repeat a camp?

While camp is designed for a single session, some campers enjoy repeating camp. We allow repeat camps, however we ask that there be at least 2 weeks between repeat camps.

## Do you have extended day options?

No, extended day options and supervision between camp sessions is not available. Quarry Hill campers should arrive and be picked up according to camp session start and end times.

## What do I need to know before registering my special needs camper?

We are happy to make reasonable accommodations for special needs. Parents and guardians with questions regarding the ability of camp staff to meet a child's needs must contact the camp director before registering for camp.

Campers who require an aide in their school setting must be accompanied by an aide at camp. It is the responsibility of the camper's family to provide this aide.

Due to group size restrictions, the Quarry Hill office needs to be made aware of any camper that will be accompanied by an aide prior to registration to ensure the group enrollment is within guidelines.

## What should my camper bring to camp?

Campers should dress for the weather in comfortable clothing. Clothing and shoes may get dirty and wet. Campers should bring a water bottle, filled with water only, everyday.

## What if it rains?

If there is no threat of severe weather, we will continue outdoor activities. In the event of inclement weather that prevents outdoor activity, camps will move indoors for alternate activities.

## What are your camp safety protocols?

Safety is a priority at camp. All staff have first aid training and are trained in safety protocol for all camp activities.

## I have more questions, what do I do?

We are available to answer your questions! Call us at the Nature Center office M - F from 9:00 am - 4:00 pm: 507-328-3950 or email us at [quarryhill@QHNC.org](mailto:quarryhill@QHNC.org).



Quarry Hill Nature Center  
507-328-3950  
QHNC.org  
[quarryhill@qhnc.org](mailto:quarryhill@qhnc.org)

